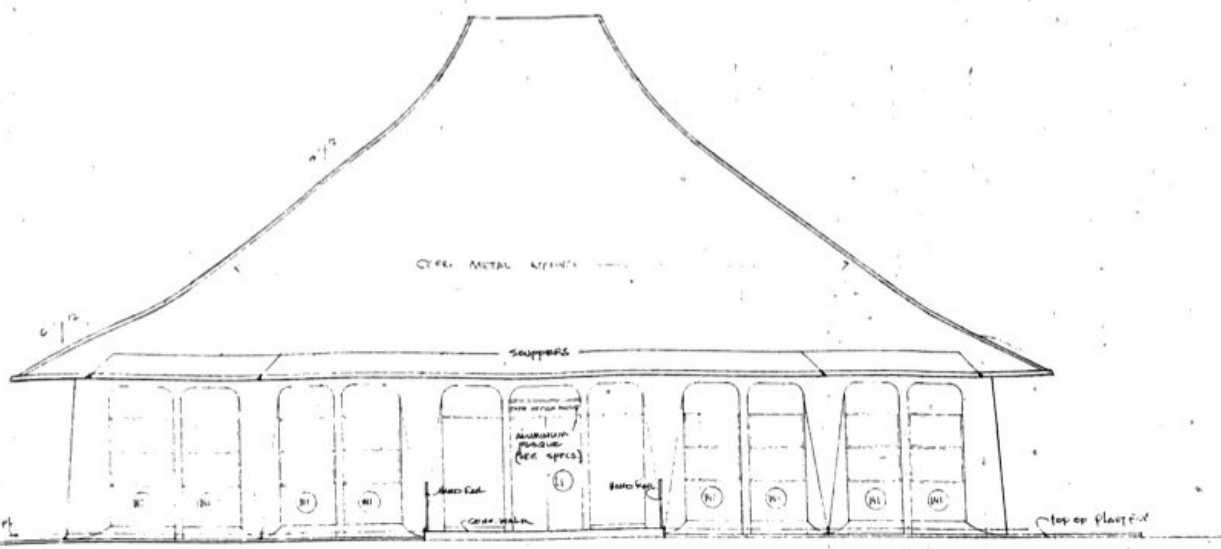
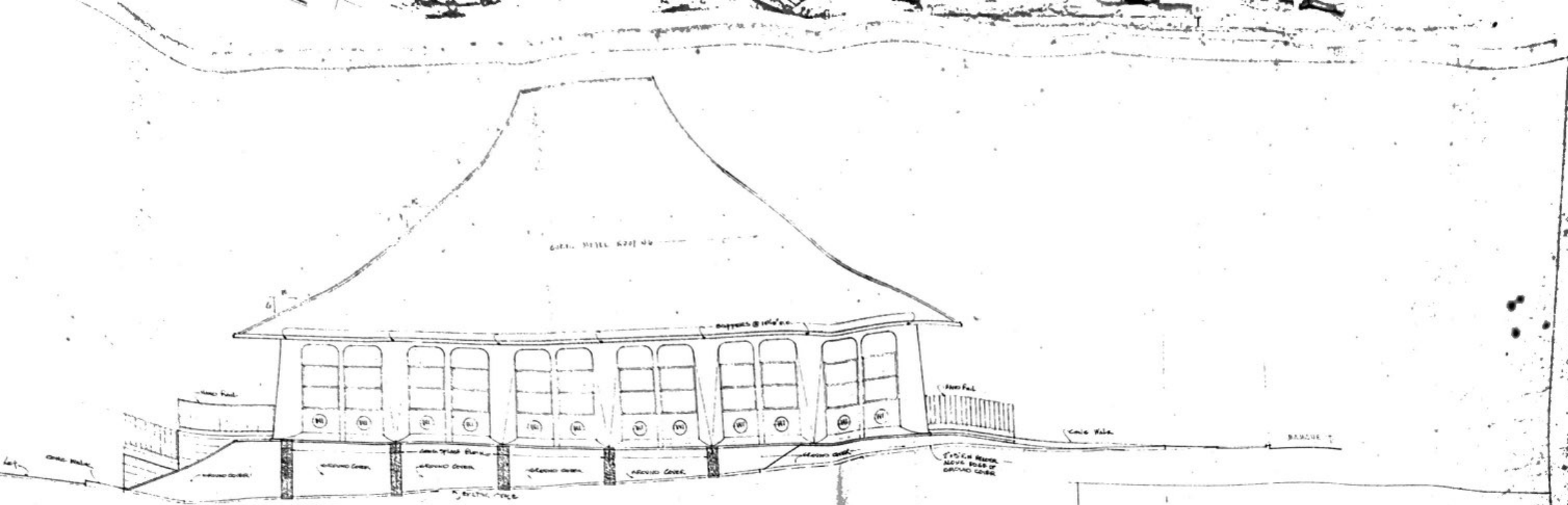


**RIGHT ELEVATION**  
1/8" = 1'-0"

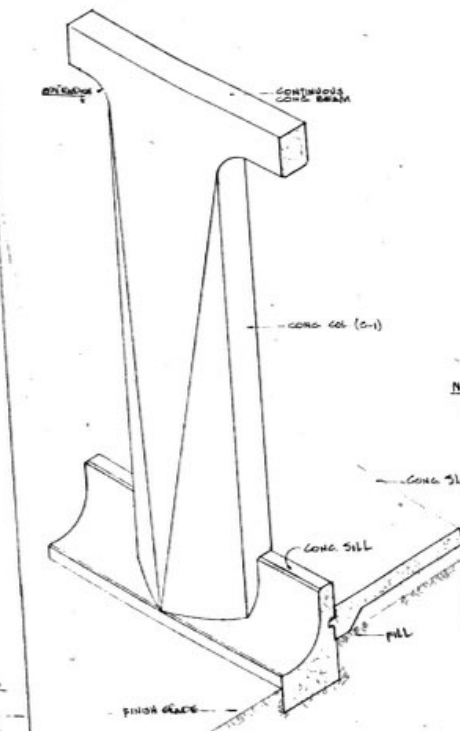
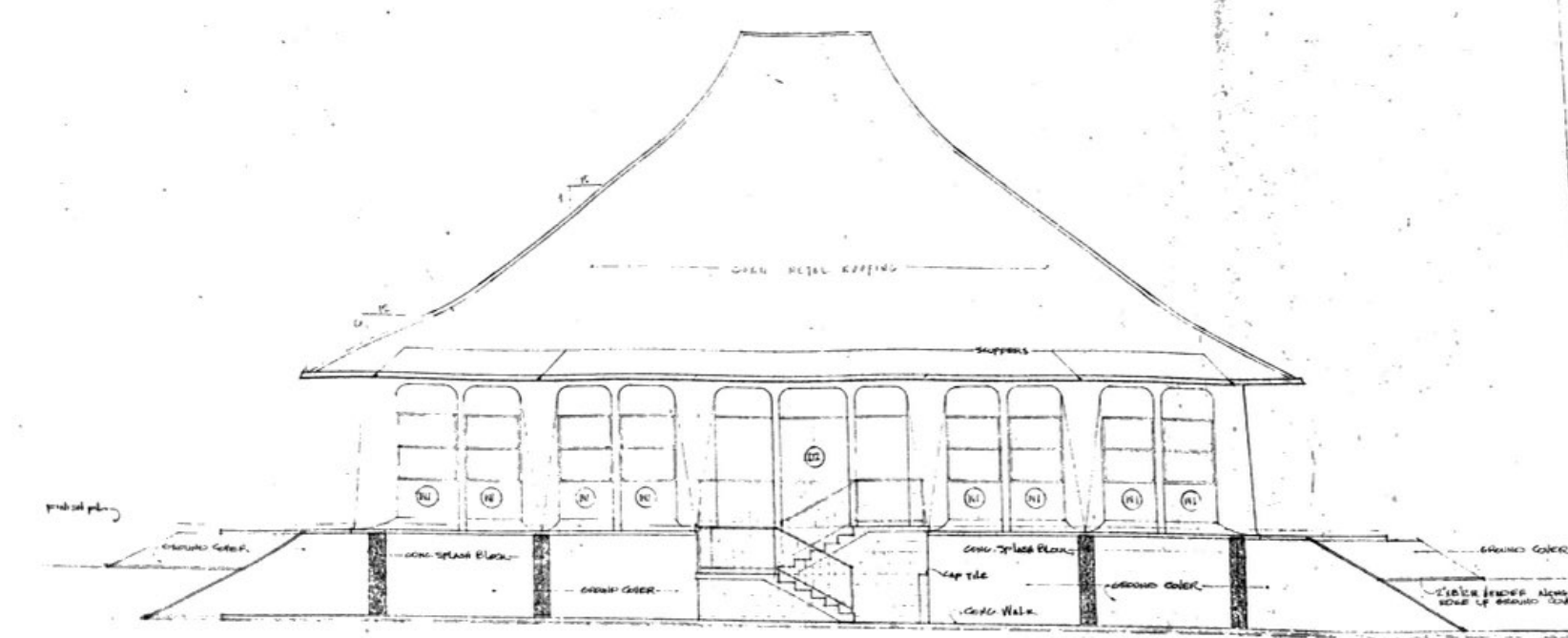


**FRONT ELEVATION**  
1/8" = 1'-0"

DEPT. OF ACCOUNTING & REVENUE SERVICES			
DIVISION OF PUBLIC WORKS			
STATE OF HAWAII			
<b>STATE OFFICE BUILDING</b>			
HONOLULU, HAWAII			
<b>EXTERIOR ELEVATIONS</b>			
DESIGNED BY	DATE	SCALE	4
VE	7/2	3/8" = 1'-0"	
BY	3/20	AS NOTED	
APP'D AS NOTED	3/20	1/8" = 1'-0"	



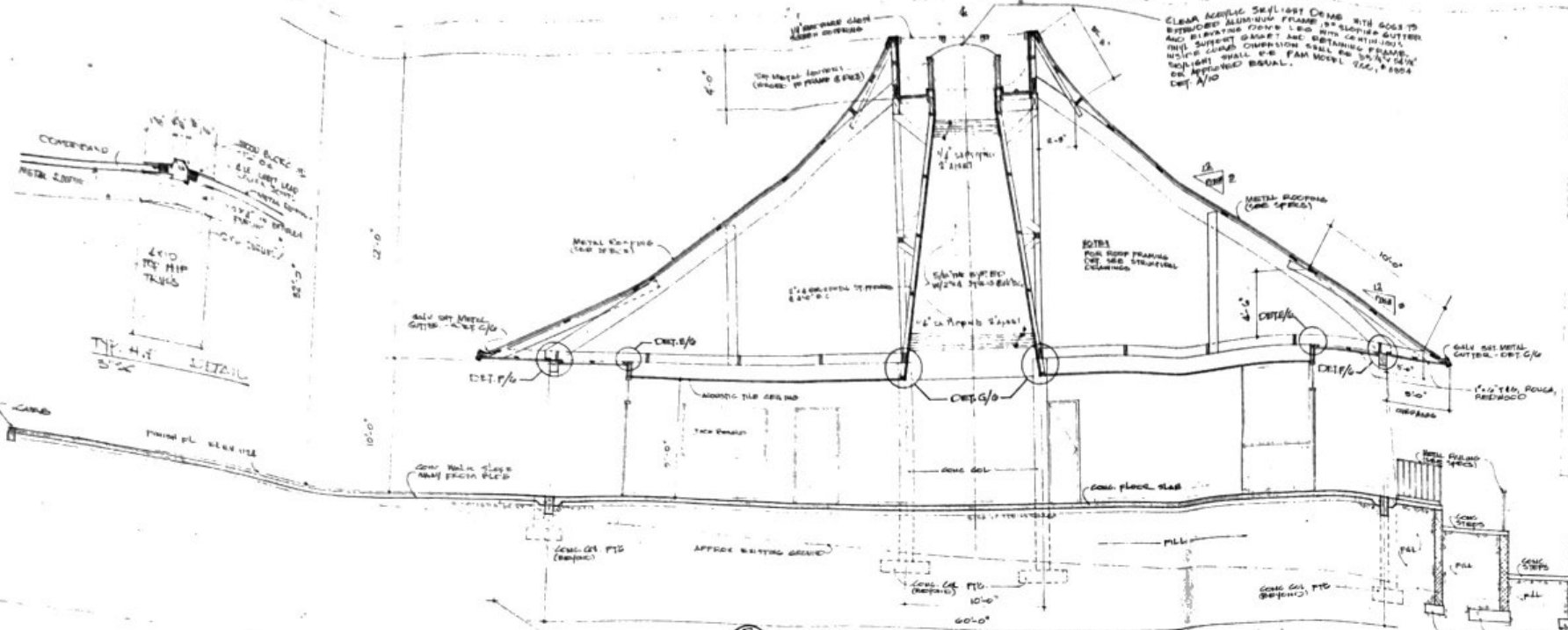
LEFT ELEVATION (1/4"



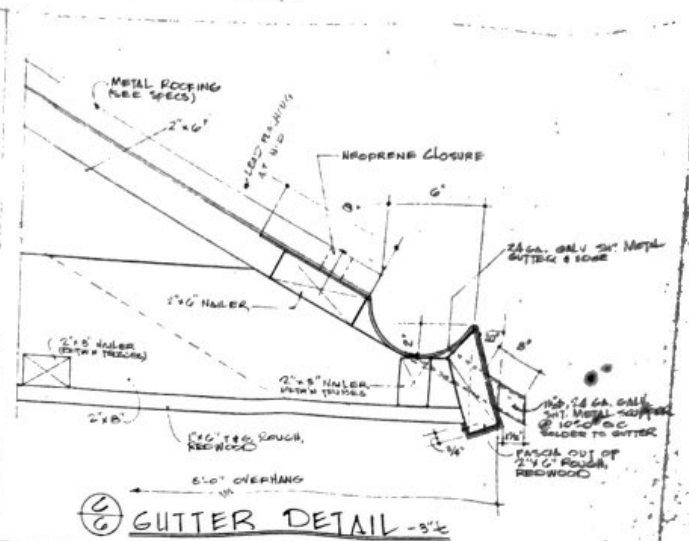
ISOMETRIC OF COLUMN

NOTE  
FOR DETAILS SEE STRUCTURAL  
DRAWINGS.

DEPT. OF ACCOUNTING & GENERAL SERVICES DIVISION OF REVENUE & TAXES STATE OF MISSISSIPPI			
STATE OFFICE BUILDING HONOLULU, HAWAII			
EXTERIOR ELEVATIONS			
DRAWN BY E.K.	CHECKED BY V.E.	DATE 10/28/54	SHEET NO. 5
SCALE AS NOTED		DRAWN BY E.K.	CHECKED BY V.E.

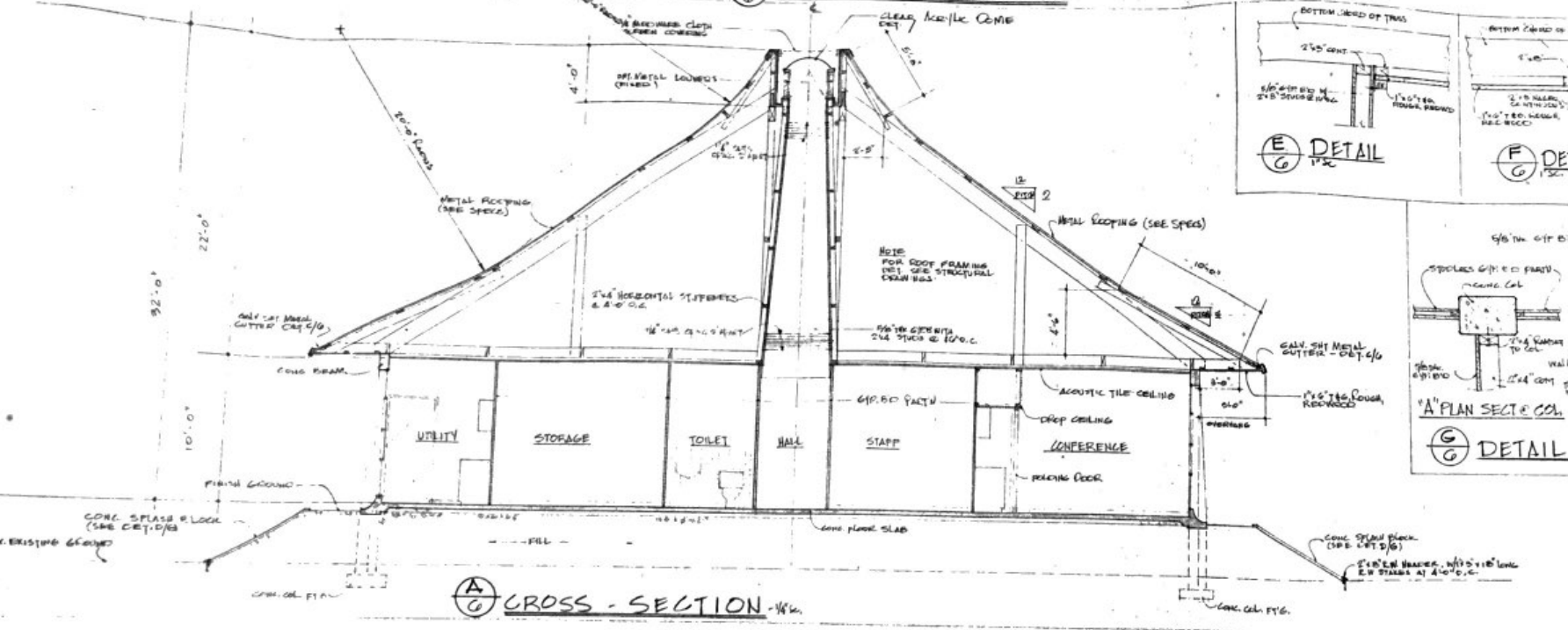


CLEAR ALUMINUM SEULFAST DRAIN WITH GUTTS TO BE USED ON ALUMINUM FRAME OR SLOTTED GUTTER AND SUPPORT GUTTER AND CONTAINING FRAME. HEIGHT SHALL BE 8\"/>

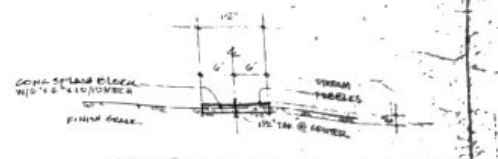


**(C) GUTTER DETAIL - 3/4\"/>**

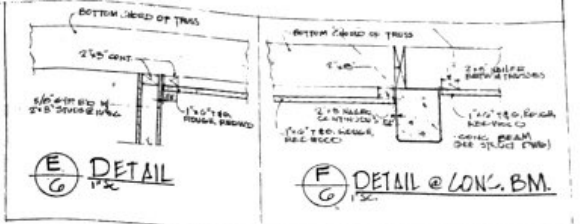
**(B) LONG - SECTION - 1/4\"/>**



**(A) CROSS - SECTION - 1/4\"/>**

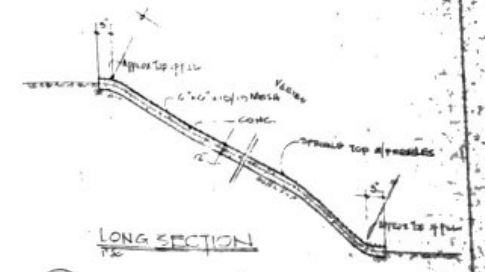


**CROSS - SECTION**

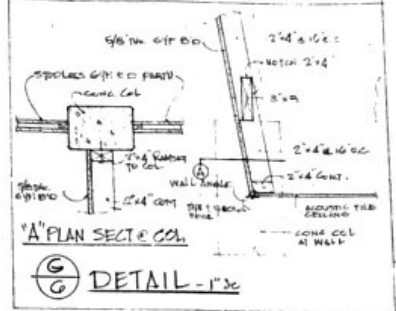


**(E) DETAIL 1/2\"/>**

**(F) DETAIL @ LONG. B.M.**

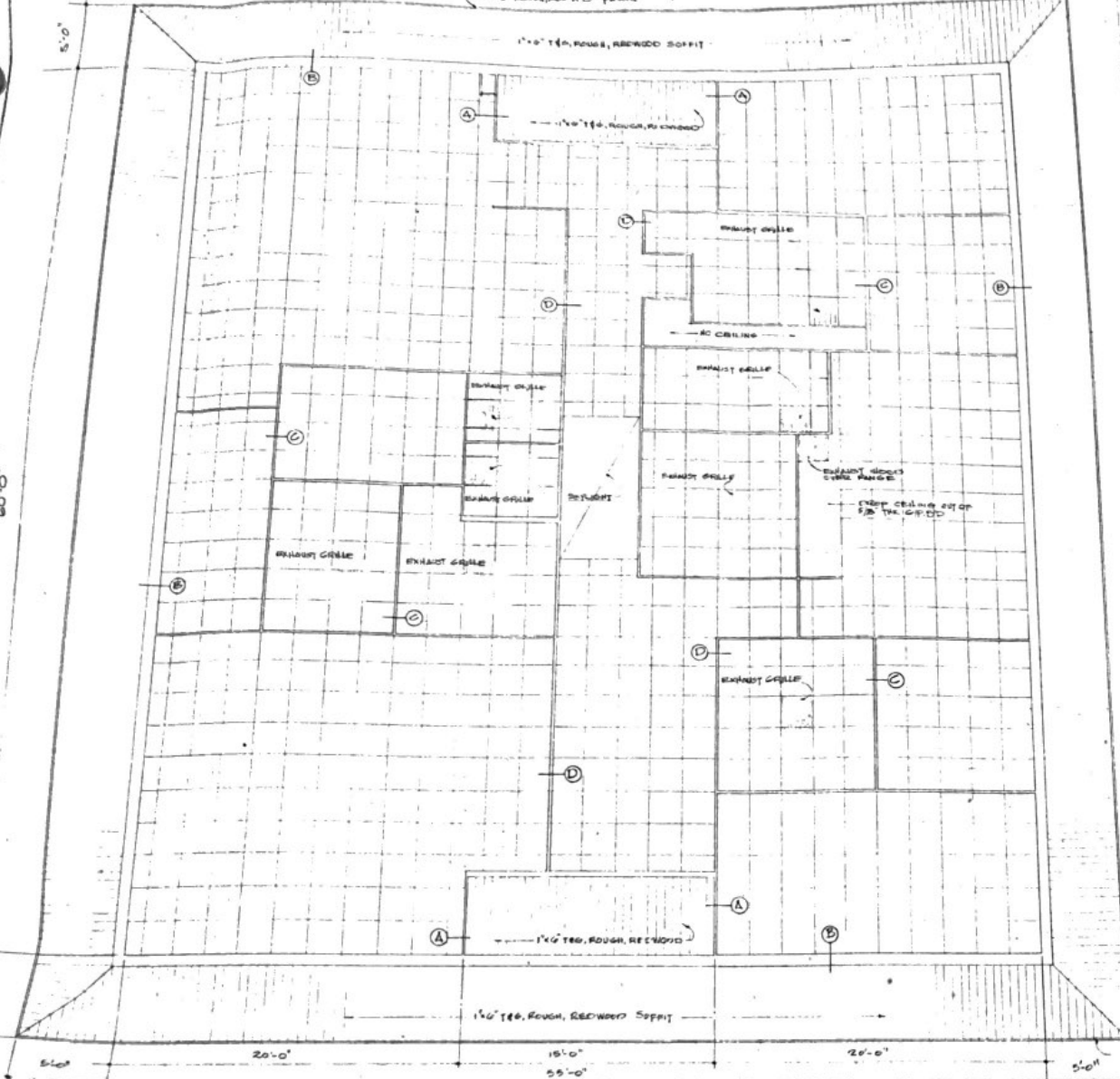
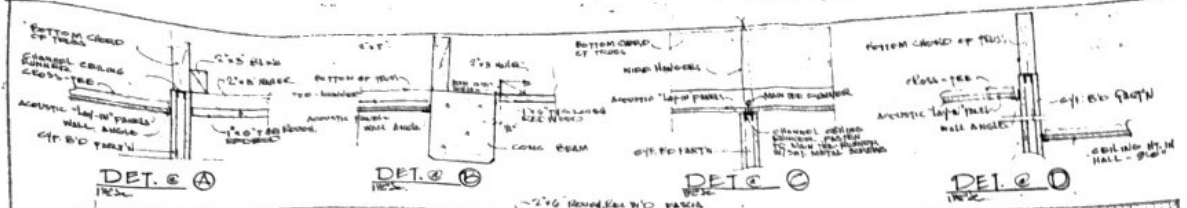


**(D) SPLASH BLOCK DET.**

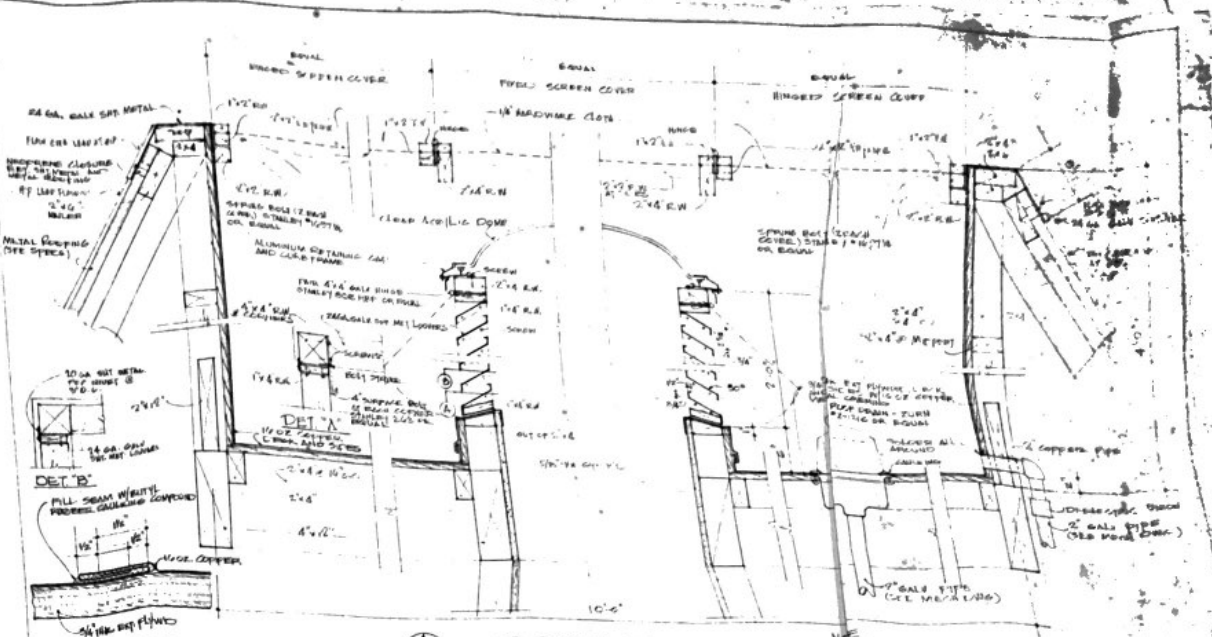


**(G) DETAIL - 1/2\"/>**

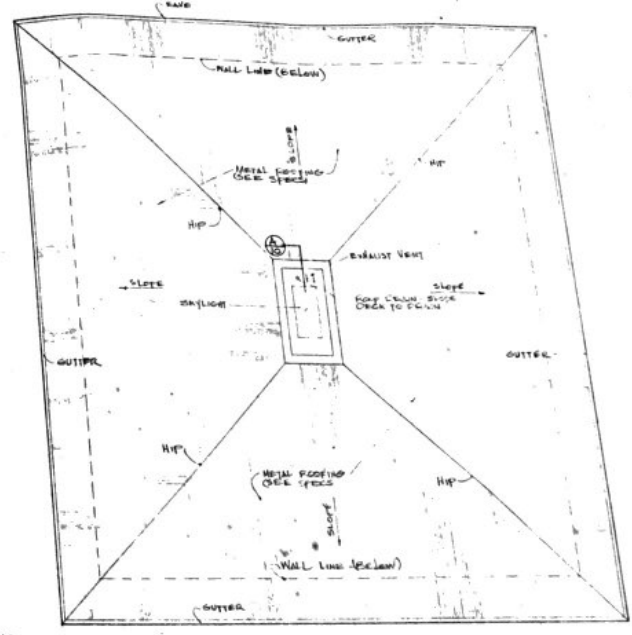
DEPT. OF ACCOUNTING & GENERAL SERVICES			
STATE OFFICE BUILDING			
HONOLULU, HAWAII			
SECTION'S SPLASH BLOCK DETAIL, GUTTER DETAIL & DETAIL			
DATE	BY	CHKD.	APP'D.
10/1/54	E. J. ...	S. ...	G
SCALE	AS SHOWN	1/4\"/>	



NOTE:  
EXCEPT WHERE NOTED, CEILING SHALL BE EUSTON 427  
TYPE, ACOUSTIC LAY-IN PANELS 5/8" x 24" x 24", 1 1/2" H,  
GRID SYSTEM.



SECTION - 1/8" SCALE



BLDG. SIGN  
1" SCALE

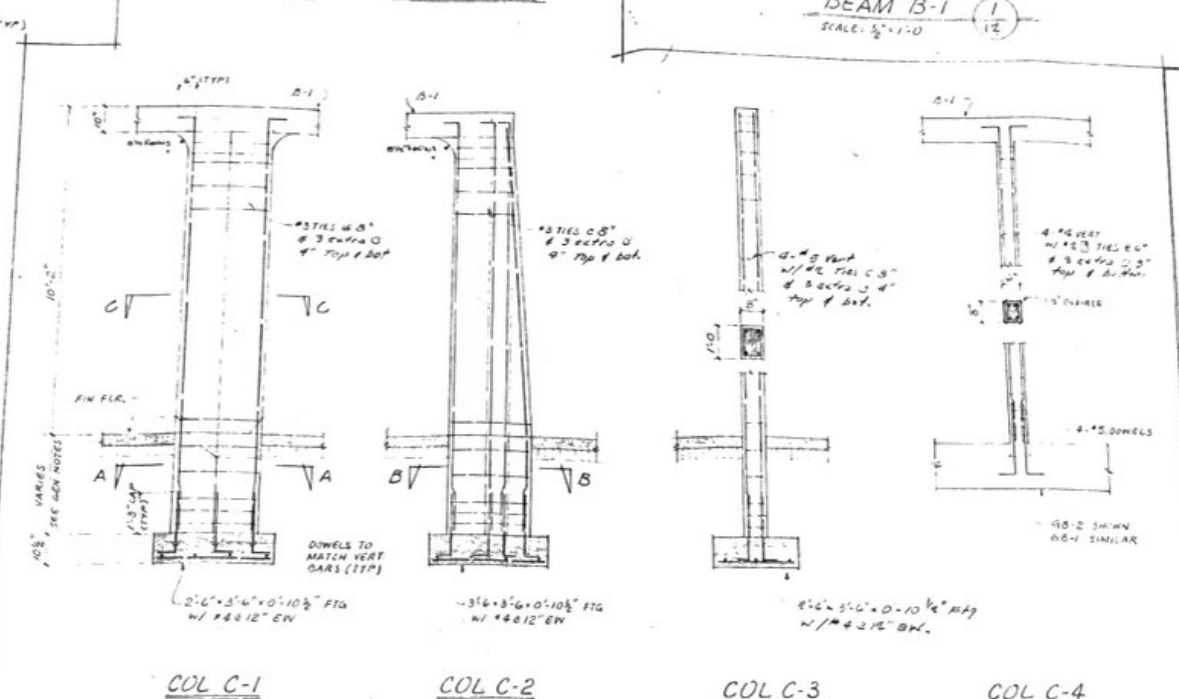
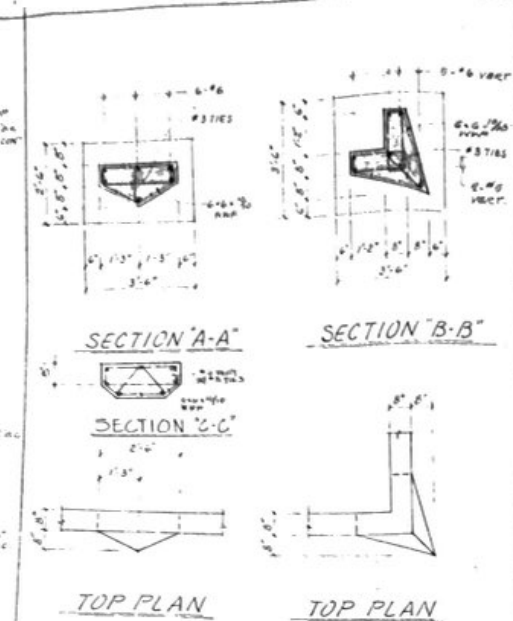
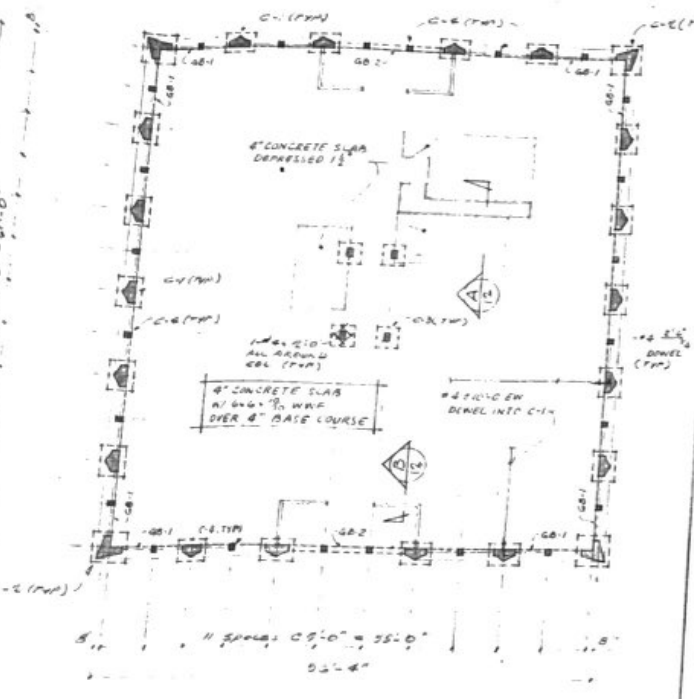
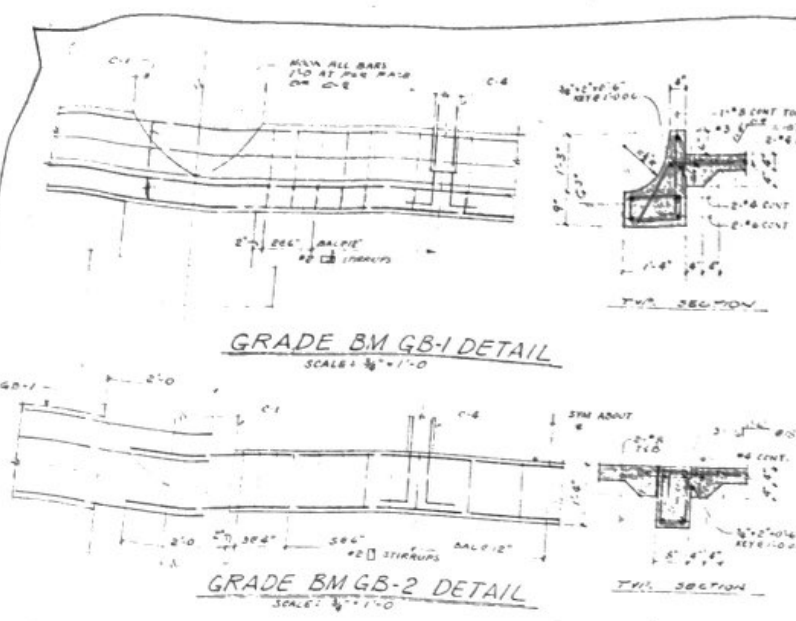
NOTE:  
BUILDING SIGN SHALL BE ALUMINUM PLATE SIGNIFICATION.

DEPT. OF ACCOUNTS & GENERAL SERVICES  
DIVISION OF GENERAL SERVICES

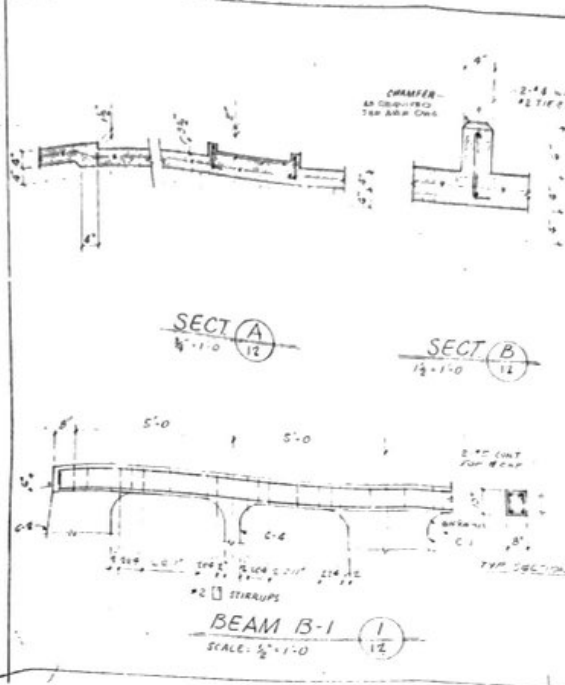
STATE OFFICE BLDG.  
HONOLULU, HI

REFLECTED CEILING PLAN, SECTION THROUGH

DATE	BY	CHKD
11/1/50	J.M.	J.M.
11/1/50	J.M.	J.M.



**CONCRETE COLUMN DETAILS**  
SCALE: 3/8" = 1'-0"



- ### GENERAL NOTES
- REINFORCED CONCRETE**
    - MINIMUM CONCRETE STRENGTH AT 28 DAYS
      - FOOTINGS & SLAB ON GRADE: 2500 PSI
      - BEAMS & COLUMNS: 3000 PSI
    - CONCRETE PROTECTION FOR REINFORCEMENT
      - FOOTINGS & SLAB ON GRADE: 3"
      - BEAMS & COLUMNS: 1 1/2"
    - SPICES IN REINFORCEMENT
      - LAPPED SPICES SHALL BE STAGGERED WHERE POSSIBLE
      - UNLESS OTHERWISE SHOWN MINIMUM LAP DISTANCE SHALL BE:
        - 24 DIA IN BEAMS AND SLABS BUT NOT LESS THAN 12"
        - 20 DIA IN COLUMNS BUT NOT LESS THAN 12"
  - CONCRETE HOLLOW BLOCK**
    - UNLESS OTHERWISE SHOWN ON PLANS, CONCRETE HOLLOW BLOCK UNITS SHALL BE 2 CELL TYPE AND HAVE A MINIMUM REINFORCEMENT AS FOLLOWS:
      - 1" BLOCKS
        - 1" x 2" VERTICAL @ 32" O.C.
        - STANDARD DIAGONAL OR EQUAL @ 16" O.C.
      - 2" BLOCKS
        - 2" x 5" VERTICAL @ 40" O.C.
        - 1" STANDARD DIAGONAL OR EQUAL @ 16" O.C.
    - ALL CELLS CONTAINING REINFORCEMENT BARS SHALL BE FILLED WITH 2500 PSI GROUT.
  - STRUCTURAL STEEL**
    - ALL STRUCTURAL STEEL SHALL CONFORM TO ASTM A572 AND GALVANIZED AFTER FABRICATION
    - ALL WELDING SHALL BE ELECTRIC SHIELDED ARC WELDING USING COATED RODS IN ACCORDANCE WITH THE CURRENT AMERICAN WELDING SOCIETY SPECIFICATIONS
    - COORDINATED ROOF DECKING SHALL BE 24 GAUGE 25" x 7" DEEP GALVANIZED STEEL DECKING, AND INSTALLED IN STRICT ACCORDANCE WITH THE MANUFACTURER'S RECOMMENDATIONS
  - TIMBER**
    - ALL STRUCTURAL TIMBER SHALL BE MINIMUM CONSTRUCTION GRADE 1500 PSI DRYWOOD FIR AND GALVANIZED
    - UNLESS OTHERWISE SHOWN, ALL CONNECTING BOLTS SHALL BE 5/8" GALVANIZED MACHINE BOLTS
  - STRUCTURAL FILL**
    - FILL MATERIAL SHALL BE SELECT NON-EXPANSIVE SOIL, APPROVED BY THE ENGINEER, (SEE SPECS)
    - FILL SHALL BE PLACED IN 6" MAXIMUM LOOSE LAYER AND MECHANICALLY COMPACTED AT OPTIMUM MOISTURE CONTENT TO 10% OR MODIFIED AASHTO T-150-67
  - CONSTRUCTION NOTES**
    - ALL COLUMNS AND WALL FOOTINGS SHALL BEAR ON FIRM UNDISTURBED OR 15" BELOW EXISTING OR FINISH GRADE UNLESS OTHERWISE SPECIFIED
    - SLAB ON GRADE SHALL BE POURED IN APPROXIMATELY 100 SQUARE FEET AREAS NOT EXCEEDING 700 SQUARE FEET WITH A MAXIMUM OF 30 FEET IN ANY ONE SIDE. THE SLAB SHALL BE POURED IN A CHECKER BOARD PATTERN WITH PROPER CONSTRUCTION JOINTS TO REMAIN IN PLACE FOR AT LEAST 14 DAYS AFTER POURING OR UNTIL THE POUR HAS ATTAINED A COMPRESSIVE STRENGTH OF 2500 PSI, WHICH EVER OCCURS LATER
    - SHOULDS & 2" BOLTIC BEAMS SHALL REMAIN IN PLACE FOR AT LEAST 14 DAYS OR UNTIL THE GROUT HAS ATTAINED A STRENGTH OF 2000 PSI, WHICHEVER OCCURS LATER
    - NO SACKS SHALL BE PLACED BEHIND RETAINING WALLS FOR AT LEAST 14 DAYS OR UNTIL THE GROUT HAS ATTAINED A STRENGTH OF 2000 PSI, WHICHEVER OCCURS LATER
    - THE CONTRACTOR SHALL NOTIFY THE ENGINEER OF THE STARTING TIME OF EACH CONCRETE POUR AT LEAST 24 HOURS IN ADVANCE
  - DESIGN NOTES**
    - ROOF LOADS: 16 PSF
    - WIND LOADS: 15 PSF
    - FOUNDATION: 2.0 G.A.S.
  - OTHER NOTES**
    - IF ANY CHANGES ARE MADE TO THE ORIGINAL DRAWINGS, THE CONTRACTOR SHALL BE RESPONSIBLE FOR NOTIFYING THE ENGINEER OF SUCH CHANGES.
    - ALL DIMENSIONS ARE TO FACE UNLESS OTHERWISE NOTED.
    - ALL DIMENSIONS ARE TO FACE UNLESS OTHERWISE NOTED.

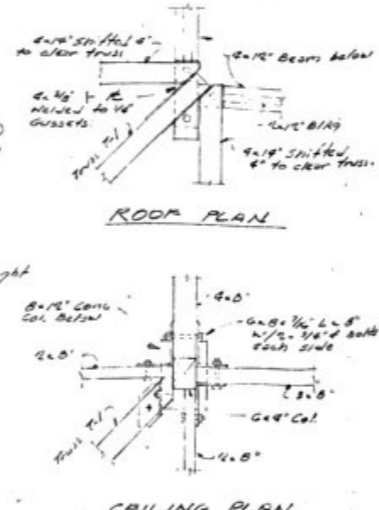
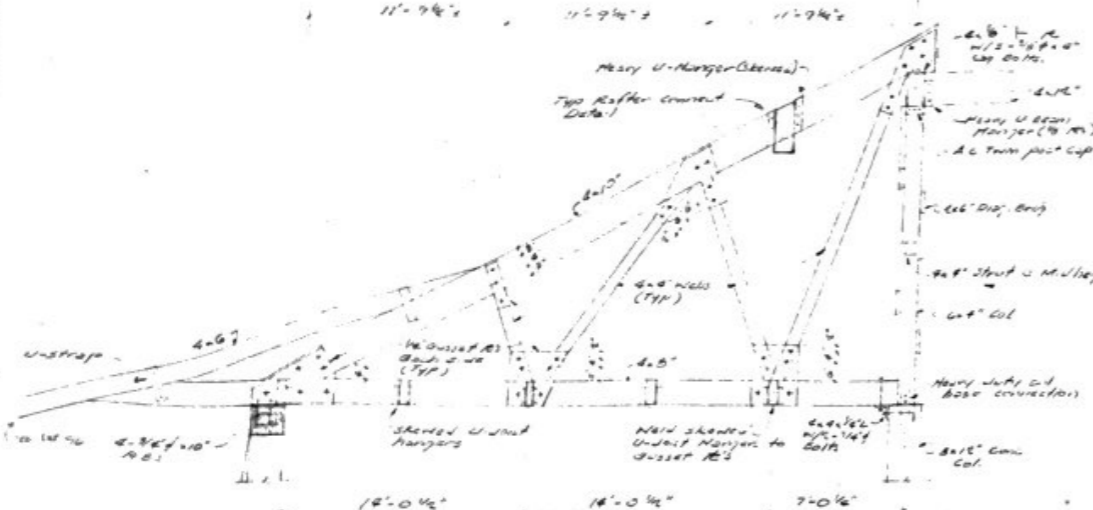
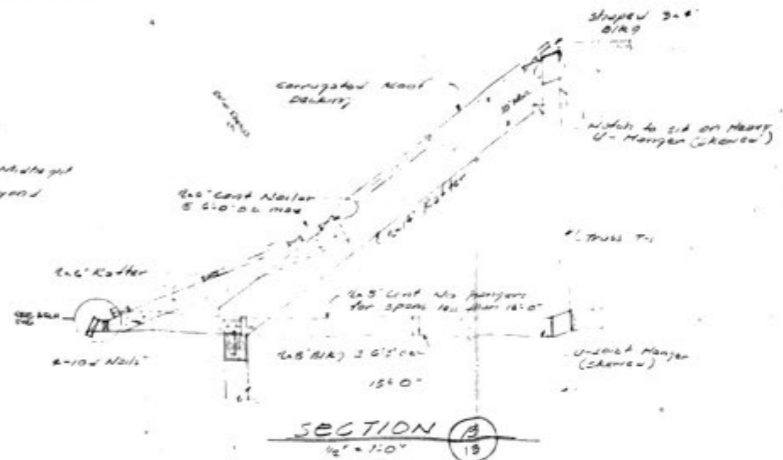
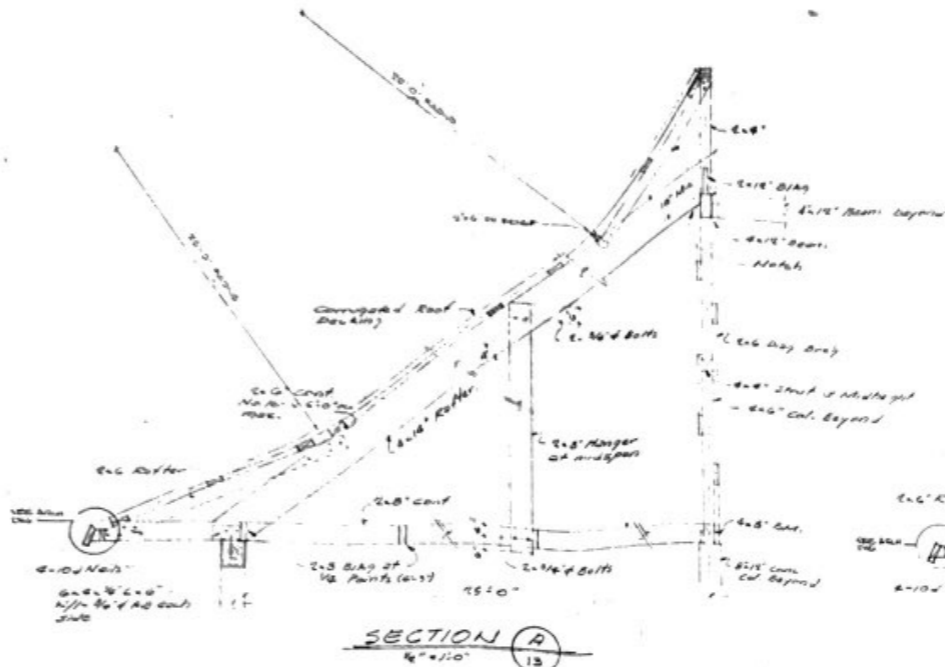
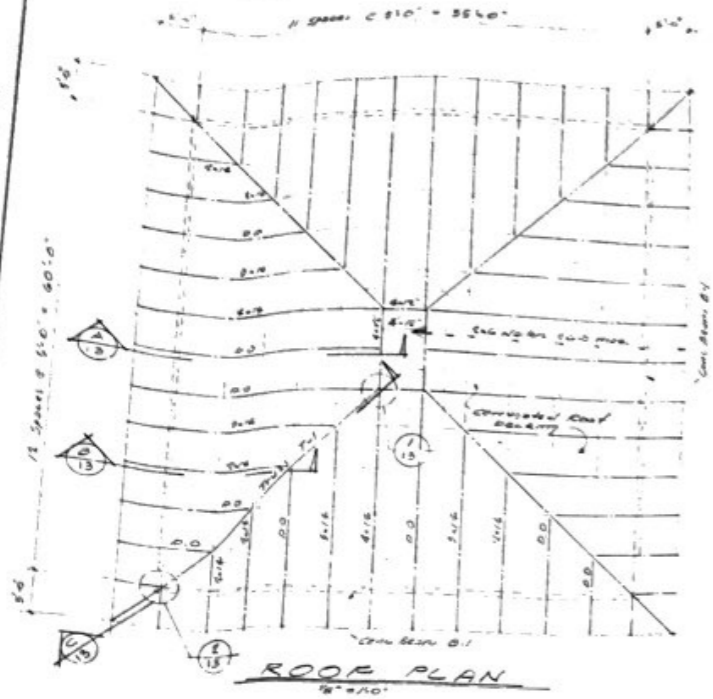
**TYPICAL CONST. JOINT DET.**

**STATE OFFICE BUILDING**  
HONOLULU, HAWAII

**FOUNDATION PLAN GRADE BEAM CONCRETE COLUMN DETAILS**

HAROLD T. MITSUNOTO  
Professional Engineer  
No. 1234  
Honolulu, Hawaii 96813

DATE: 10/15/68  
BY: H.T.M.  
CHECKED BY: H.T.M.  
SCALE: AS SHOWN



**NOTE** All connections to be built with 2x6 bolts.

**SECTION C**  
NTS

**DETAIL 1**  
1"=1'-0"

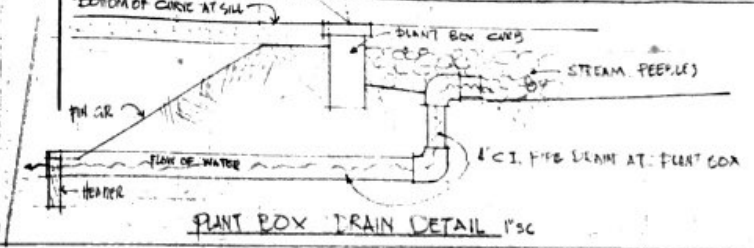
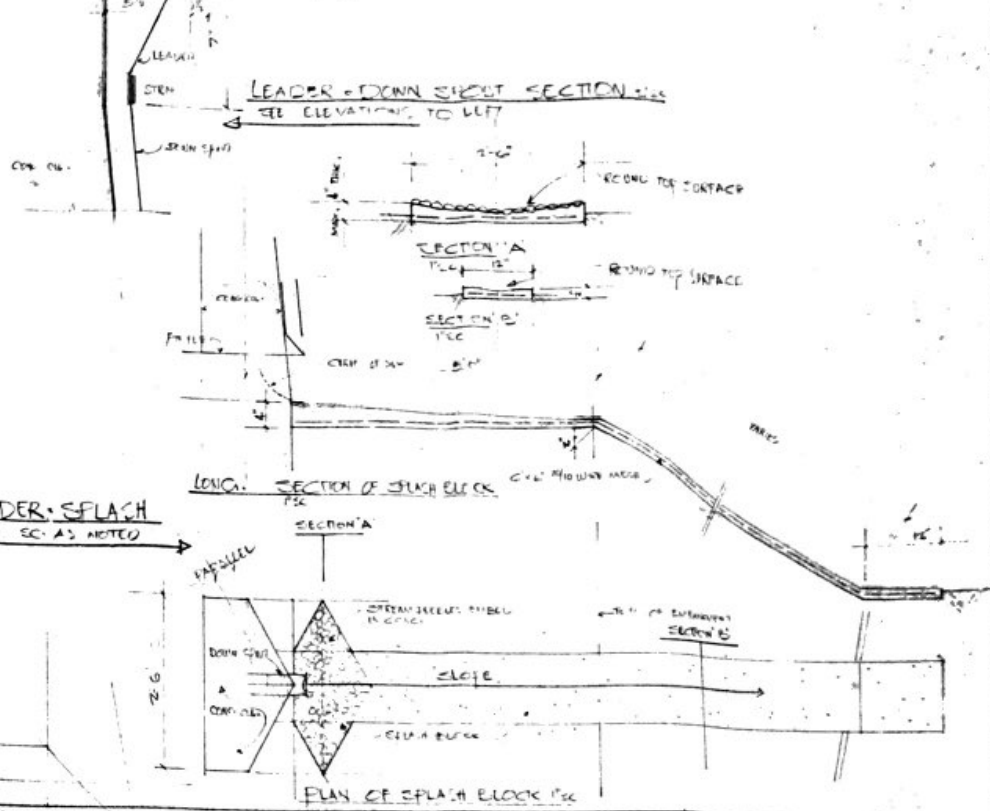
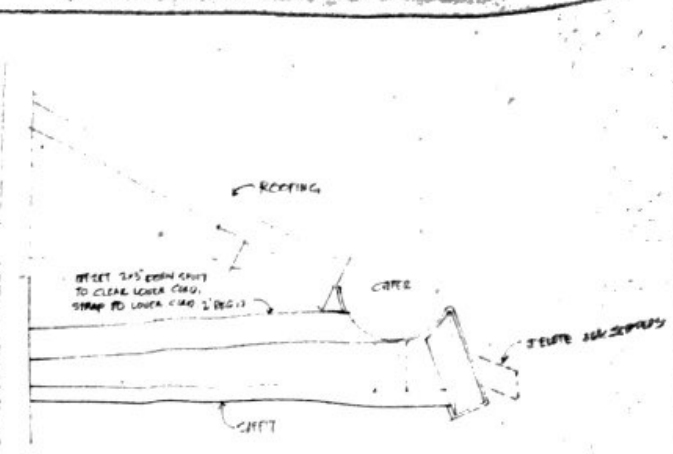
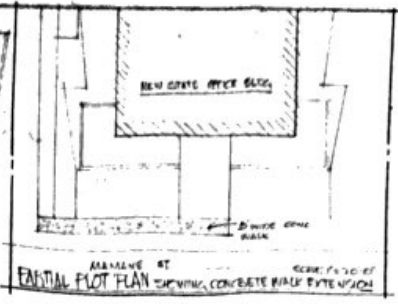
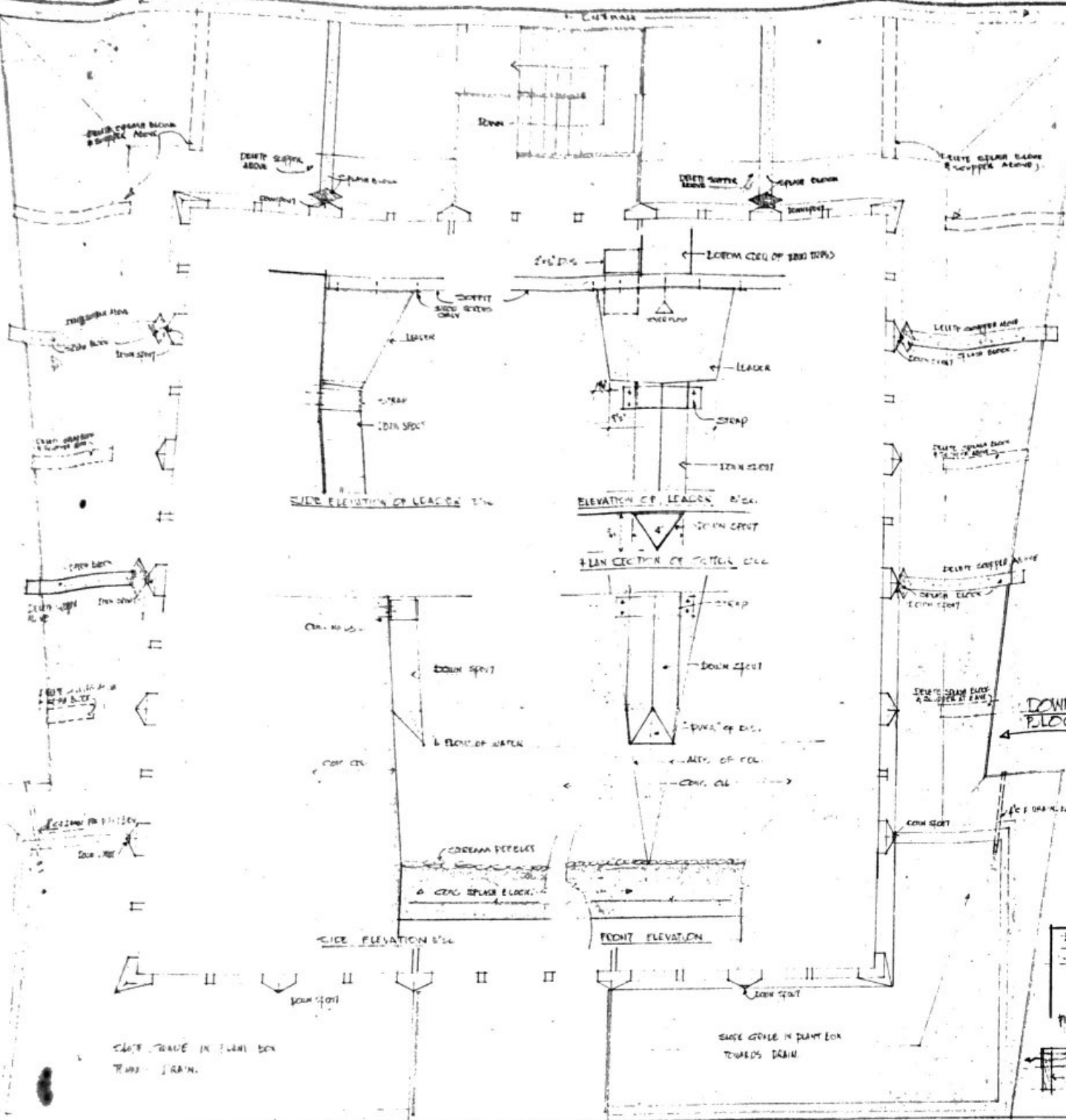
**DETAIL 2**  
1"=1'-0"

HAROLD T. MIYAMOTO  
ARCHITECT  
1121 KALANANAKU AVE. SUITE 1100  
HONOLULU, HAWAII 96813

**STATE OFFICE BUILDING**  
HONOLULU, HAWAII

**ROOF PLAN & DETAILS**

DATE: 11/10/54  
BY: H.T.M.  
CHECKED: H.T.M.  
SCALE: AS SHOWN



DEPT. OF ACCOUNTING & GENERAL SERVICES DIVISION OF PUBLIC WORKS STATE OF HAWAII			
<b>STATE OFFICE BUILDING</b> HONOLULU, HAWAII			
FIRST CONTRACT DRAWING # 2			
DATE 11-1-59	DRAWN BY M. M. M.	CHECKED BY M. M. M.	SCALE AS SHOWN
DATE 11-1-59	DRAWN BY M. M. M.	CHECKED BY M. M. M.	SCALE AS SHOWN